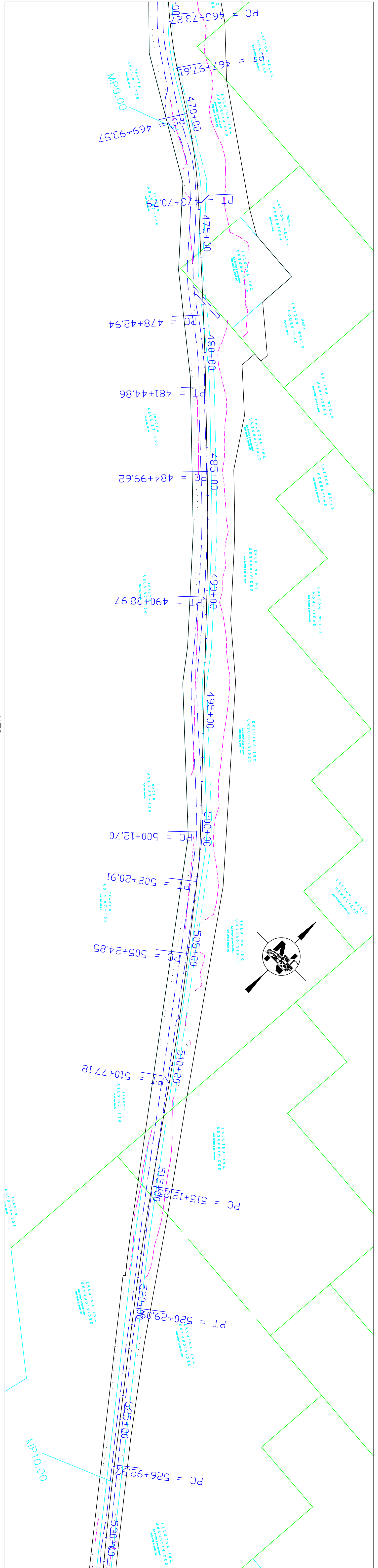



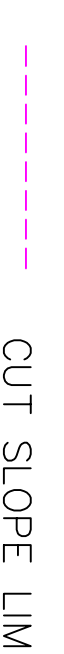
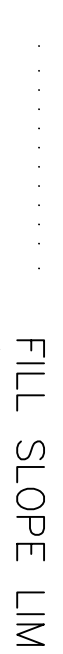
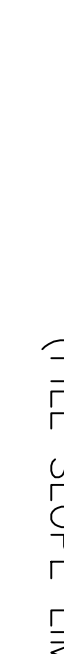
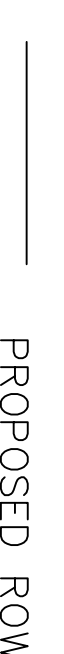

NTS



NTS

EAGLE RIVER ROAD REHABILITATION--PROPOSED ROW  
TNH 12/07/07

PROPOSED ROW FOR ROAD FROM ASLS (BLM LANDS), MANAGED BY DNR /  
PARKS  
10.6 Acres

-  EXISTING ROAD
-  CUT SLOPE LIMITS
-  FILL SLOPE LIMITS
-  (FILL SLOPE LIMITS ON RT SIDE OF ROAD ARE FOR DNR PATHWAY
-  PROPOSED ROW FOR ROAD
-  EXISTING ROW FOR ROAD